

## VORPA SL gaffette leggere in acciaio per tubi e cavi

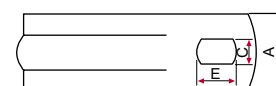
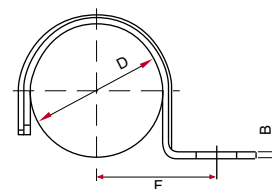
- *VORPA SL light steel clips for pipes and cables.*

Gaffette in acciaio con zincatura tropicalizzata in diverse dimensioni per il fissaggio di tubi leggeri da mm. 7 a mm. 50.

*Zincplated steel clips available in different sizes with single or double hole to fix light pipes and cables from  $\varnothing$  mm. 7 up  $\varnothing$  mm. 50.*

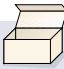


E x C	D
6,5X4,5	7
12,5X6,5	10 > 50

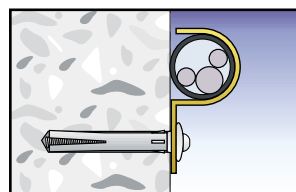
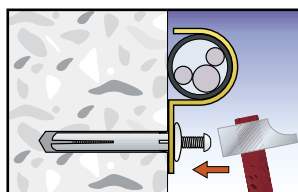
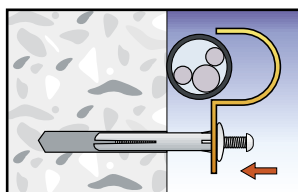


### Gaffette leggere a 1 foro **SL1** zincate.

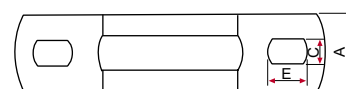
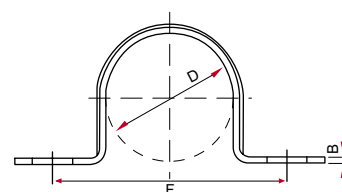
*Zincplated light clips **SL1** single hole.*

Art.	Tipo Type	A x B mm.	F interasse F axle mm.	Per tubi D For pipes D	
3338	SL1 - 7	10 x 0,9	14	7-8	200
3339	SL1 - 10	14 x 1,2	17	10-11	100
3340	SL1 - 12	14 x 1,2	18	12-13	100
3341	SL1 - 16	14 x 1,2	20	16-17	100
3342	SL1 - 20	14 x 1,2	22	19-20	100
3343	SL1 - 22	14 x 1,2	24	21-22	100
3344	SL1 - 26	14 x 1,2	26	25-26	100
3345	SL1 - 28	14 x 1,2	28	28-30	100
3346	SL1 - 32	15 x 1,8	33	31-32	100
3347	SL1 - 38	15 x 1,8	46	38-40	100
3348	SL1 - 50	15 x 1,8	53	50	50

Sequenza di montaggio




E x C	D
$\varnothing$ 5	10 > 13
6,5X5	16 > 19
8,5X6,5	22 > 28
10X6,5	32 > 50



### Gaffette leggere a 2 fori **SL2** zincate.

*Zincplated light clips **SL2** double hole.*

Art.	Tipo Type	A x B mm.	F interasse F axle mm.	Per tubi D For pipes D	
3352	SL2 - 10	10 x 0,9	31	10	200
3353	SL2 - 13	10 x 0,9	32	13	100
3354	SL2 - 16	12 x 0,9	34	16	100
3355	SL2 - 19	12 x 0,9	38	19	100
3356	SL2 - 22	14 x 0,9	41	22	100
3357	SL2 - 26	14 x 0,9	47	26	100
3358	SL2 - 28	14 x 0,9	50	28	100
3359	SL2 - 32	14 x 0,9	54	32	100
3360	SL2 - 38	14 x 0,9	61	38	100
3361	SL2 - 50	14 x 0,9	80	50	50